

# TIME TRAVEL



SAMUEL YEOM

This puzzle reuses the mechanics from the CMU Fall 2018 puzzle hunt, which can be accessed by following the "Previous Hunts" link on the hunt website. Each of the mini-puzzles can be solved by following the steps outlined in the solution to the corresponding puzzle in the Fall 2018 hunt. The first five mini-puzzles give one letter each, and these letters are inputs to the final mini-puzzle, which outputs the answer JUPITER.

## SMASHING THE MIRROR

F	I	T	I	N
L	S		L	T
I	A		I	S
L	O	C	H	E

Shapes of springs - COILS  
Relating to a child - FILIAL  
Frozen water - ICE  
Shades - TINTS

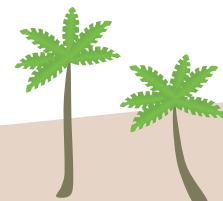
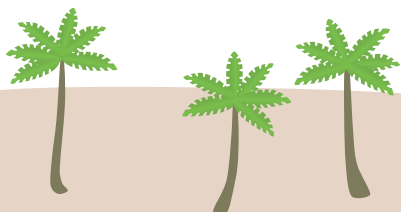
## PRINT JOB

Hawaii or the Florida Keys, for example



ARCH

I P E L A G O



# SCENES OF THE CRIME

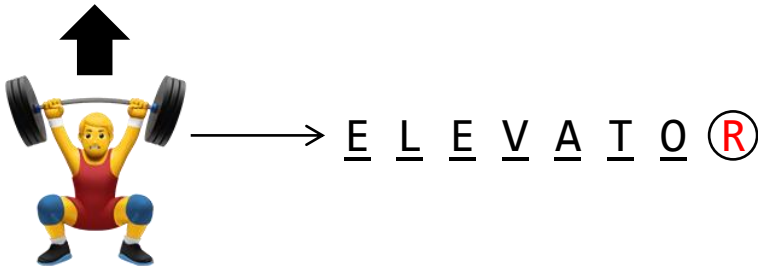
(Paved Red Pit + A) anagrams into (David A. Tepper)

Recovered Data: Paved Red Pit



## GLOBAL TRAVELLER

LIFT in British English is  
ELEVATOR in American English



## A TIME CHANGE



## ONE STEP FORWARDS

This is the metapuzzle.

